



WaterGate

Instant flood protection of residential
and commercial property



WaterGate Advantages

Research shows that as a result of climate change, the amount of rain falling annually will be rising, while the length of the dry periods will remain the same. This means that more rain will fall over a given period of time. As a result, there will be more flash rainfalls which usually occur in the spring and summer.

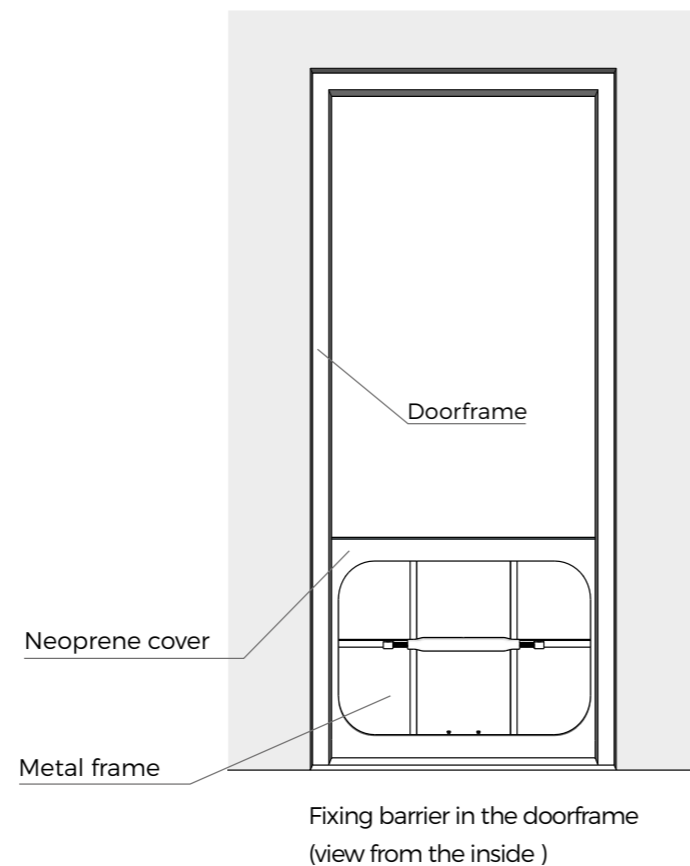
Mobile flood barriers WaterGate, fixed immediately in the doorways help quickly and efficiently protect the property against floodwater. WaterGate may be used in residential, commercial and industrial buildings.

Money saving through prevention

The costs of repairing the flood damage may be very high. The WaterGate barriers are an economic, simple and efficient floodwater protection dedicated to owners of residential, retail or office buildings.

WaterGate barriers are an advanced and efficient protection alternative to such makeshift solutions as sandbags or wooden barriers.

A single barrier provides protection alternative to 50 sandbags, while its weight does not exceed the weight of a single sandbag.



Rapid rainfalls are especially damaging in urbanized areas with large surfaces that would not allow for water saturation. If the rainwater does not sink into the ground, it finds its way to the sewage system which very often does not cover the whole city area or does not have the sufficient intake capacity. In such cases, flash flooding may occur.

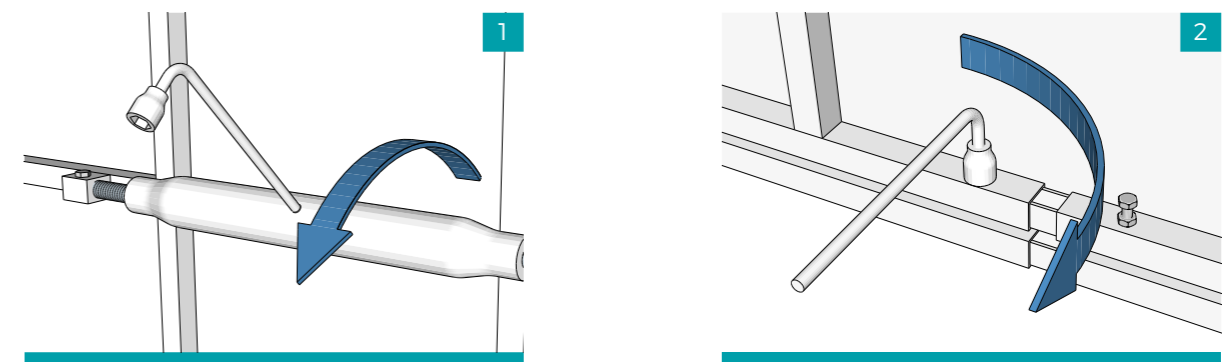
Continuity of your business

Effective flood prevention offered by WaterGate helps maintain the businesses operational, even during natural disasters. Entrepreneurs avoid situation where they have to incur fixed costs of running a business without generating any income.



Fast and easy fixing

The WaterGate barriers are composed of steel frame covered with tight neoprene cover. During the assembly, specially developed mechanism attached to the rear of the frame allows both the frame and cover to expand telescopically widthways into the walled area (1). Four bolts situated along the bottom edge of the frame are then adjusted to provide a seal along the ground (2).



Due to its unique expandable design, WaterGate does not normally need any permanent fittings to the property and does not require pre-drilling of the door frame, making it ideal for use on old and listed buildings.

WaterGate Frequently Asked Questions

Will WaterGate work in my doorway?

A WaterGates can be successfully used on most entrances with inward opening doors. As each gate is only 25mm thick.

Can I use a WaterGate to protect a door from the inside?

Yes, this is possible. The WaterGate barriers may be applied in case of the majority of doorways ranging from 95 to 115 cm.

Is the product guaranteed?

The stringent physical tests ensure the effectiveness of WaterGate which also carries a 12 month manufacturers warranty.

Are there any hidden costs?

No. Our prices are competitive because there are no permanent fittings to the property and, whilst we are delighted to offer advice, a site survey is unnecessary in the vast majority of instances.

My door frame is very uneven, will this affect the seal?

It will depend on the degree of unevenness. The thickness of the neoprene jacket affords some tolerance but, the smoother, the even the surface the better the seal. We recommend installing the barrier during dry conditions and testing the seals using a hosepipe or similar, to determine what, if any, remedial work might be required.



Contact

Pietrucha Sp. z o.o. International Spółka Komandytowa
Pietrucha Group
ul. Przemysowa 10, Błaszki 98-235, Poland
offer@pietrucha.pl
+48 513 094 015

www.pietrucha.pl